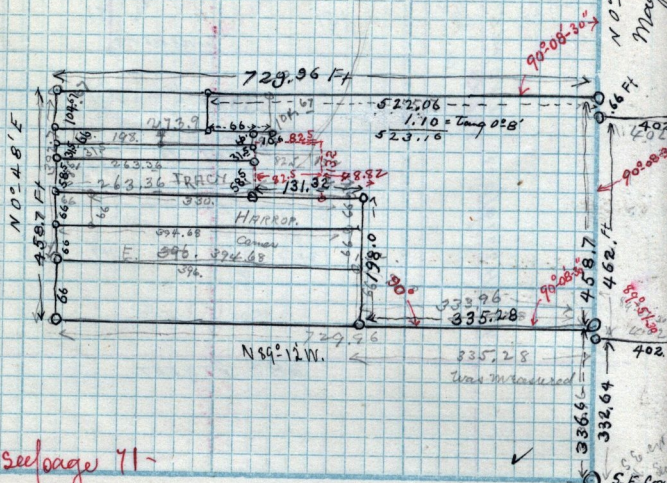


March 21<sup>st</sup> 1890

Price 97.5 X 137. to be cut out.



N 0° 56' E by computation  
 Magnetic N 16° 15' W

see page 71

Bridge 1.580 ch wide on main & 3.15 ch deep from E. line of main  
 Scale: Chains per inch.

- + 6.10 E  
 Beg. at 5.04 ch N. from S.W. cor. N. W. 1/4 Sec 16 T-6-1-W.  
 E 3.84 ch N. 7.00 ch W. 3.84 ch S. 7.00 ch to beg.
- Also Beg. 5.04 ch N. from S.W. cor. same 1/4 Sec. N. 7.00  
 ch E 9.94 S 7.00 ch W. 9.95 ch to beg. - T. Wilson to F.A.  
 Miller.
- Christofferson to Miller - Pt N. E 1/4 Sec 17 T-6-1-W. Beg. 5.  
 ch N. from S.E. cor. N. 6.95 ch. W 11.00 ch S 5.95 ch E 6.00  
 S 1.00 ch E 5.05 ch to beg. 7.70 a.
- J. A. Miller to David Garner Beg. 7.00 ch N. 5.08 ch W. from  
 S.E. cor. N. E 1/4 17 - W 6.00 ch S 1.00 ch in center of St. E. 6.00 ch  
 N. 1.00 ch to beg.
- Miller to James Harropps Beg 8.10 N 5.28 ch W. from S.E. cor  
 N. E 1/4 17 - W 5.00 S 1.00 E 5.00 N. 1.00 to beg.